

WORKTOP CONNECTOR "FIX-MORE"

The Fix-More steel connector offers a smart and efficient solution for assembling worktops, countertops, and panels, as well time as cost saving. Its ultra-slim design makes it perfect for materials as thin as 10 mm.

Features:

- Suitable for plates down to 10 mm.
- Clips are made of durable spring steel, ensuring optimal strength and tension.
- Screw is produced in hardened steel with a specially designed slim head.
- May be pre-inserted into worktops before positioning them on kitchen cabinets.
- Easy assembly, simply push the screw into the clip. For final tightening, either tap it in or secure it using an M4 hex key.



PATENTED

Material: Steel – bright zinc plated.

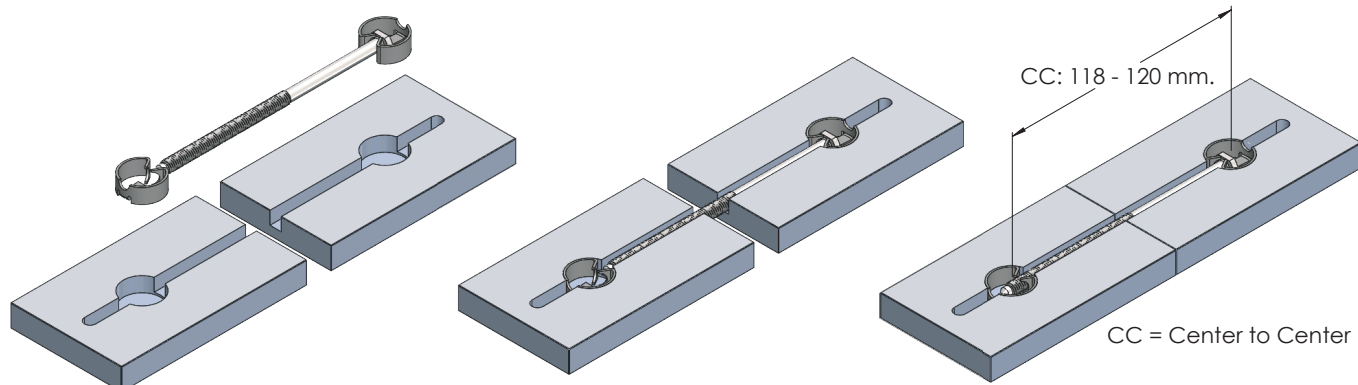
Clip size: Ø 20 x 8 mm

Item No.: # 11.04.465

Screw size: M6 x 120 mm

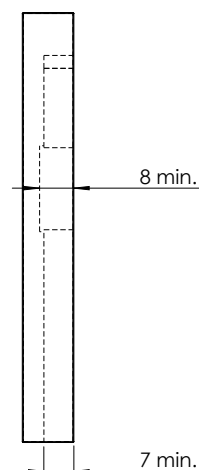
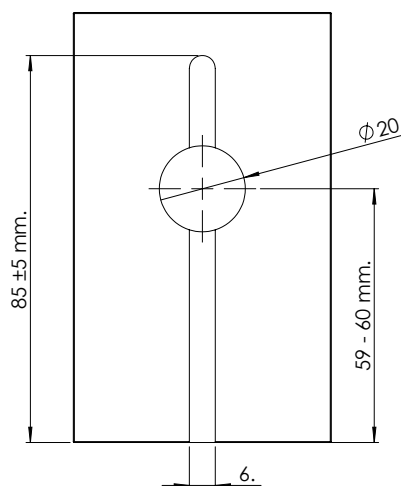
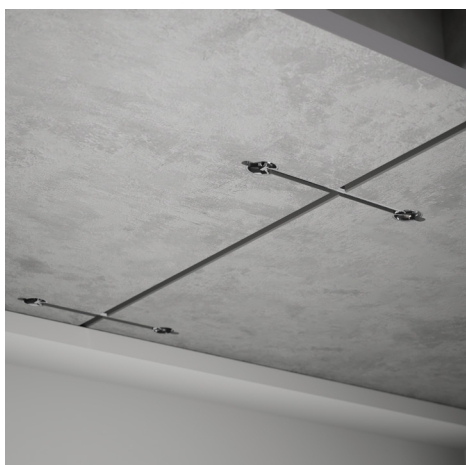
Item No.: # 11.04.466

(2 clips & 1 screw needed for 1 connection)



WORKTOP CONNECTOR "FIX-MORE"

- high quality furniture fittings



SISO A/S

Mileparken 11 Phone: (+45) 45 830 900
DK - 2740 Skovlunde (Copenhagen) E-mail: siso@siso.dk
Denmark Web: www.siso.dk